

F6



PRODUCT

The F6 cylinder with freely duplicating keys is an entry-level vertical key system. The F6 is available in keyed different, keyed alike versions and for Masterkey systems.

APPLICATION

F6 is suitable for securing the secondary entrances of your home or of a commercial facility. Furthermore small-medium masterkey systems can be created.

VERSION

Available in compact and modular design as:

- single profile cylinder
- double profile cylinder
- pre-arranged for knob
- knob cylinder

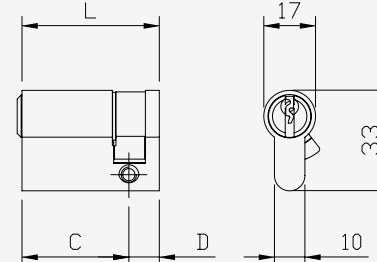
Available in compact design as:

- rim cylinder
- round cylinder

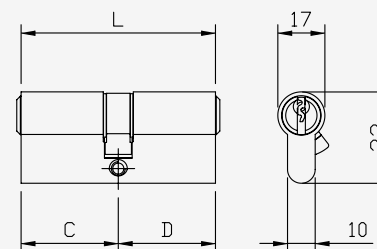
TECHNICAL PRODUCT FEATURES

- Cylinder body and plug made of brass in the standard version matt nickel-plated
- Suitable for installation in fire doors
- Encryption pins in stainless steel
- Counterpins in brass
- Springs in stainless steel
- Euro-profile cylinder (norm)
- Locking cam made of sintered steel
- Locking cam in min. 30° position (according to DIN)
- In each plug are 2 picking-resistant counterpins
- The drilling protection consists of a hardened steel pin in the cylinder body

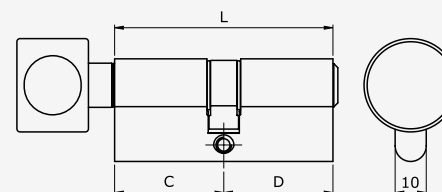
SINGLE PROFILE CYLINDER



EUROPEAN DOUBLE PROFILE CYLINDER



EUROPEAN DOUBLE PROFILE CYLINDER. ROUND KNOB



F6

FEATURES

F6 has 6 encryption pins from a length of 30-30 made of wear-resistant special brass, per locking side.

A anti-pick protection is integrated in the profile cylinder.

The surface of the cylinder body is matt nickel-plated or brass as standard.

Three overlapping profile ribs of the plug increase the the security of the profile cylinder against unauthorised openings (paracentric key profile). The keys are made of nickel coated brass.

Optionally selectable features:

- Emergency and danger function

Further systems of the F6 series:

- F6 Extra (with additional drilling protection)

- F6 Extra S (with additional drilling protection, sacrificial cut and pull-resistant bar)

- F6 Extra S3 (with BSI*** certification)

More details can be found on the respective data sheets

STANDARDS

Compact and modular version:
DIN EN 1303: 2015-08
(1I6I0IBI0IC16I0)