

## D3D-16-004

### Dynamic 3D universal hinge for 9 mm Eurogroove position

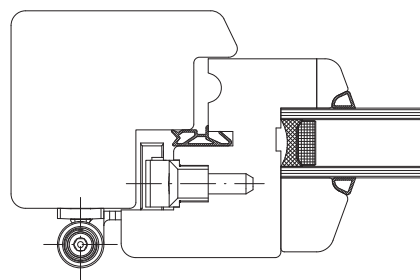
For wood doors and windows

Load per hinge 35 kg

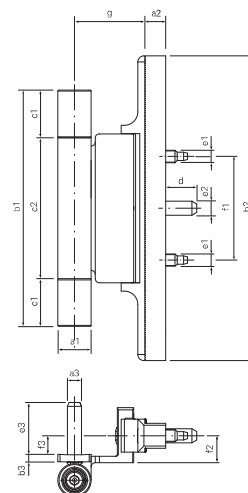
Adjustable +/- 4mm in height, +/- 2mm horizontal and min. +/- 1mm gasket pressure



Article	Material	Finish	Salt spray test hour	Packaging test hour
1288710	Steel / Zamak	Beige RAL 1013	1000	12
1288708	Steel / Zamak	Brown RAL 8003	1000	12
1288706	Steel / Zamak	Brown RAL 8022	1000	12
1288711	Steel / Zamak	Light bronzed	140	12
1288712	Steel / Zamak	Matt chrome	140	12
1288707	Steel / Zamak	Brassed	24	12
1288705	Steel / Zamak	White	1000	12

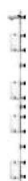


a1	a2	a3	b1	b2	b3	c1	c2	d	e1	e2	e3	f1	f2	f3	g
mm	mm	mm	mm	mm	mm	mm	mm	mm	mm	mm	mm	mm	mm	mm	mm
16,0	9,0	6,7	114,0	147,0	3,5	23,0	68,0	15,0	6,0	6,8	25,2	50,0	12,0	9,0	34,0



CE Approval tested to EN 1935

#### associated articles



BA-D3D	BBAR-MSL-D3D	BA-D3D-01
p. 10.3 2	p. 10.3 3	p. 10.3 1