

Pressure Gun DLP 900

APPLICATION

The pressure gun **DLP 900** is used for the dosing of 900 g-twin cartridges **COSMOFEN DUO**, **COSMOFEN AL** and **COSMOPUR 870** with static mixture. – For professional use by instructed personnel only.



REMARK

To be connected to dry and de-oiled compressed air.

Max input pressure 10 bar!

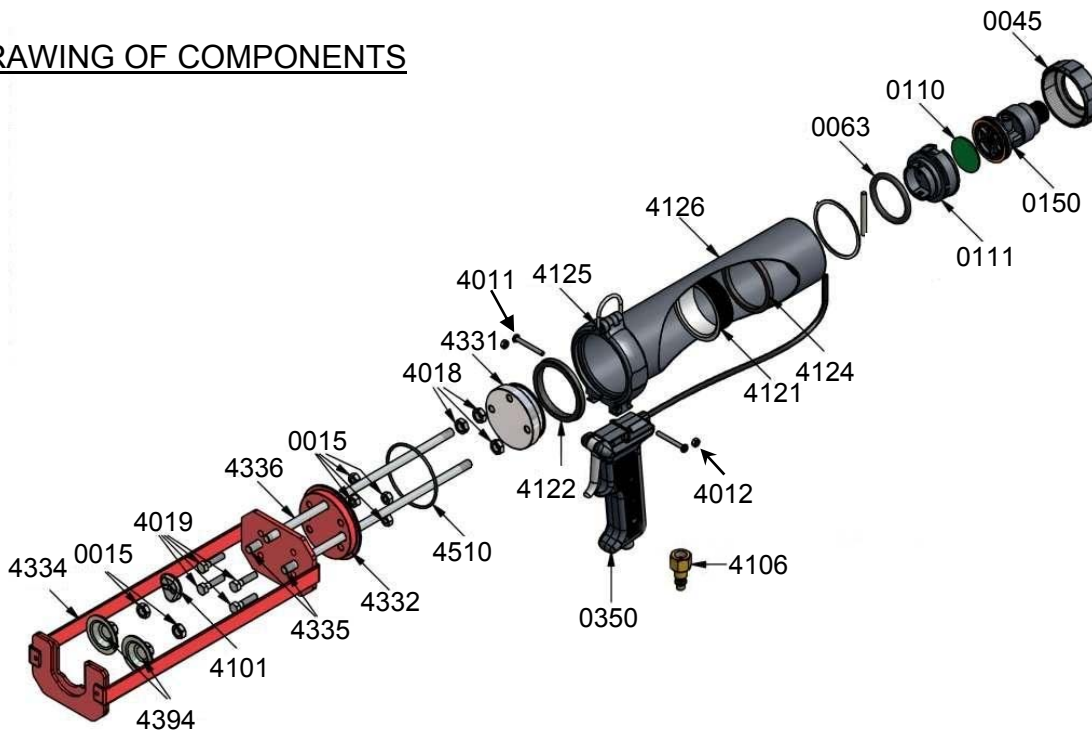
In order to guarantee that the conveyor bar works well, this should be oiled regularly.

Please take care that the conveyor plate is screwed at the same level as the conveyor bar.

When changing the cartridge, please first turn off the pressure of the pressure gun.

Pressure Gun DLP 900

DRAWING OF COMPONENTS



SPARE PARTS

900.0015	female screw of conveyor bar M8
900.0045	sleeve nut with fine thread
900.0063	sealing ring bottom part
900.0110	rubber membrane
900.0111	mounting device bottom part
900.0150	pressure reducing valve
900.0350	handle
900.4011	fastening screw for handle
900.4012	fastening female screw for handle
900.4018	fastening female screw for pressure cylinder
900.4019	fastening screw for pressure cylinder
900.4101	restoring button
900.4106	compressed air connection euro clutch
900.4121	cylinder screwing for compressed air
900.4122	sealing for compressed air piston in front
900.4124	sealing for compressed air piston behind
900.4125	fastening of handle
900.4126	compressed air cylinder
900.4331	compressed air piston
900.4332	cover for compressed air cylinder in front
900.4334	mounting device for cartridge
900.4335	Conveyor bar
900.4336	restoring rod
900.4394	conveyor plate metal
900.4510	sealing of cover for compressed air cylinder in front

Our instructions for use, processing directives, product- or performance indications, as well as other technical statements are only general guidelines; they only describe the nature of our products (determined value at the production time) and their performance, but they give no guarantee in accordance with paragraph 443 of the BGB (Civil Code). Due to the variety of application purposes for each product, and due to a lot of different particular conditions (e. g. processing parameters, material properties, etc.), the user has to carry out his own individual qualifying tests. Our consultation in application technique, verbal and in writing, as well as with tests, is offered free of charge and is not legally binding. These documents replace former issues